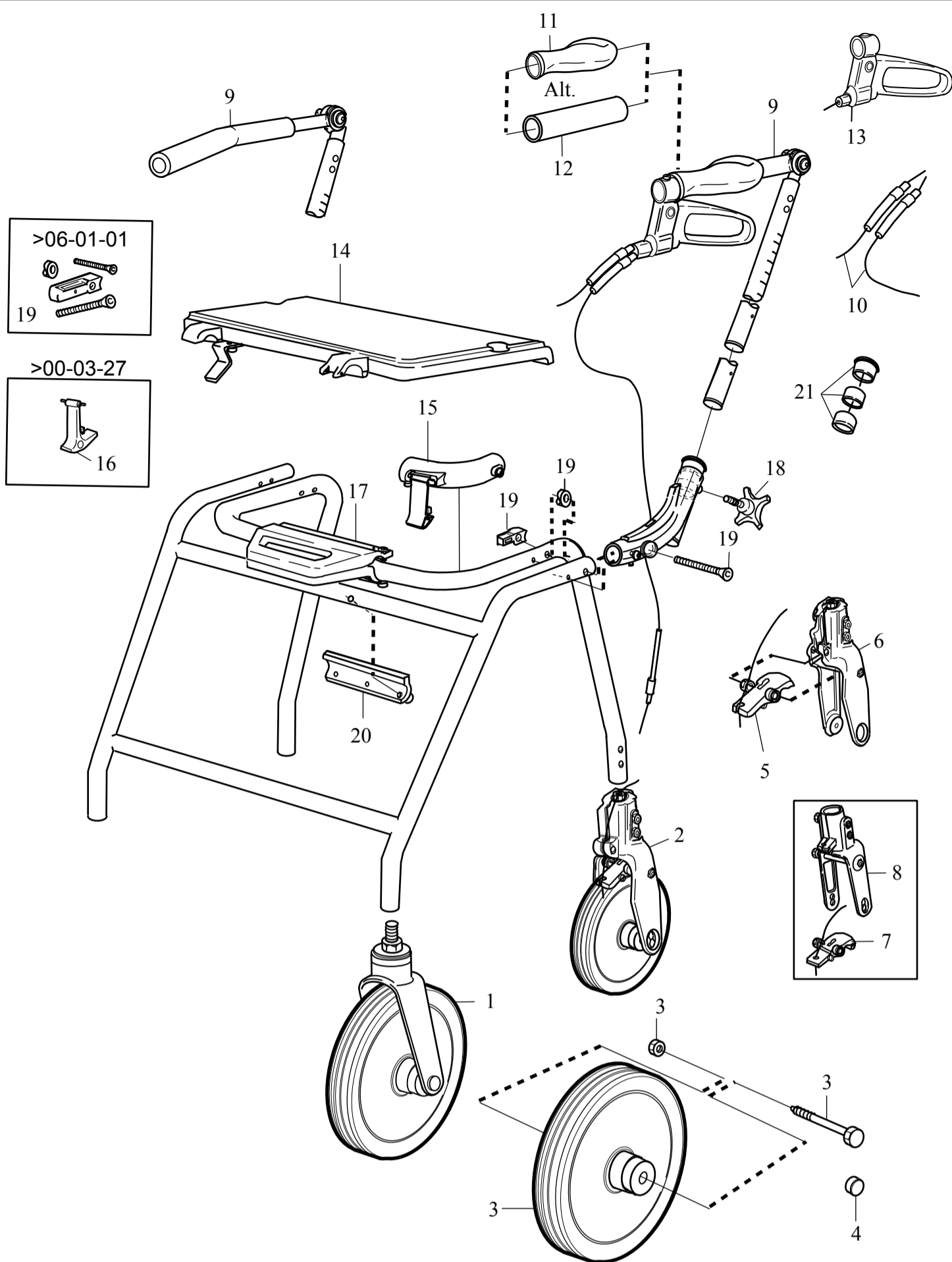


DOLOMITE HP



- | | | |
|----|------------|---|
| 1 | 13565-25 | SLII-wheel in front fork (pcs) |
| 2 | 12590-25 | SLII-wheel in rear fork, DABSII (pcs) |
| 3 | 12609 | SL II-wheel kit complete (pcs) |
| 4 | 70050 | Cover (pcs) |
| 5 | 12620 | Brake flap, complete DABS II (pcs) grey |
| 6 | 13096 | Rear fork, DABS II (pcs) from 1 January 2004 |
| 7 | 12617 | Brake flap, complete DABS (pcs) black |
| 8 | 13095 | Rear fork, DABS II (pcs) until December 2003 |
| 9 | 12611-L-45 | HP-handles. HP-left, active-right w. wire covers (pair) * |
| | 12611-R-45 | HP-handles. HP-right, active-left w. wire covers (pair) * |
| | 12611-L-52 | HP-handles. HP-left, active-right w. wire covers (pair) * |
| | 12611-R-52 | HP-handles. HP-right, active-left w. wire covers (pair) * |
| | 12611-L-60 | HP-handles. HP-left, active-right w. wire covers (pair) * |
| | 12611-R-60 | HP-handles. HP-right, active-left w. wire covers (pair) * |
| | 12611-L-68 | HP-handles. HP-left, active-right w. wire covers (pair) * |
| | 12611-R-68 | HP-handles. HP-right, active-left w. wire covers (pair) * |
| 10 | 80057 | Wire (unit) |
| 11 | 12519 | Anatomic grips, incl. Cover (pair) |
| 12 | 12593 | Soft grip, L=150 mm incl. Covers (pair) |
| 13 | 12507-L | One-hand-brake, left incl. wire (pcs) |
| | 12507-R | One-hand-brake, right incl. wire (pcs) |
| 14 | 12545 | Flip-up seat, compl w. attachment part w/o safety latch (pcs) |
| 15 | 12656 | Safety latch, frame assembly (pcs) |
| | 70202 | Safety latch without holder |
| 16 | 12615 | Safety latch, seat assembly (pcs) |
| 17 | 12622 | Folding handle kit (pcs) |
| 18 | 70253 | Knob (pcs) |
| 19 | 1452148 | Folding hinge kit (pair) |
| 19 | 12648 | Plastic rail for folding mec. incl. screws (pcs) |
| 20 | 12647 | Components for hinge (pair) |
| 21 | 12687 | Components for hinge (pair) |
| | 82117 | Assembling instructions (pcs) |