

**SAFETY**

- Do not use as a wheelchair or transport chair.
- Do not under any circumstances stand on the walker.
- Use seat for stationary seating only. Never sit and push with your feet.
- Never lift the walker in the folding handle when it is in use
- Do not go up or down stairs or use on escalator.
- Both brakes must be in the parking position when the walker is used as a seat.
- The walker must be fully unfolded when used as walking support. N.B. The walker may only be used as a walking support.
- Be extra careful when using the walker on a sloping surface.
- Be extra careful when carrying heavy loads in the basket. Loads may only be carried in the basket or on the tray. Max load on tray 11 lbs. (5 kg).

**ACCESSORIES**

- A) Mounting of basket.
- B) Secure the tray using the plastic plugs.
- C) Cerb climber

**FOLDING SEAT**

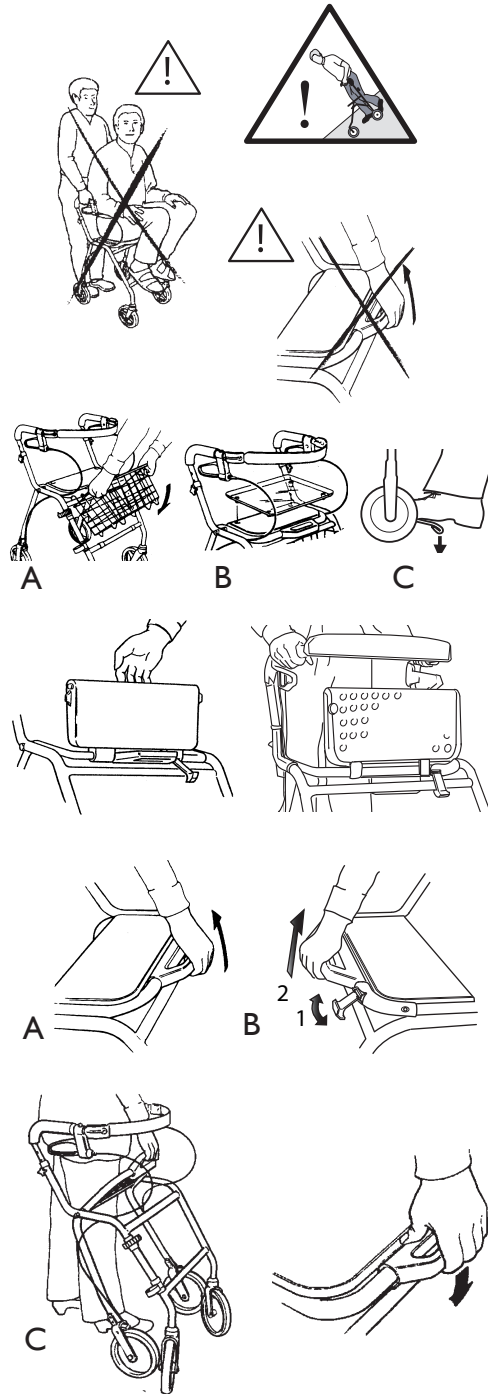
The seat can be folded up to provide a larger walking space and in order to increase accessibility.

**FOLDING**

- A) **DOLOMITE LEGACY**  
To fold, lift up handle.
- B) **DOLOMITE OPAL 2000, MAXI**
  1. Lift up the safety latch.
  2. Lift the handle to fold the walker.
- C) When folded, the walker is easy to lift and carry.

**OPERATING POSITION**

To reset to walking position, press firmly downwards on the seat until a clicking sound is heard.



**BRAKES**

Apply the brakes by pulling **both** brake-handles upwards.

**PARKING BRAKE**

Press down carefully for parking brake. A clear sound is heard when the brake is placed in correct position. N.b. Always place both brakes in parking position. Pull upwards to loosen the brake.

**Both** brakes must be in the parking position when the walker is used as a seat.

**ADJUSTMENT OF BRAKE EFFECT**

For desirable braking strength, adjust the brake wire. Suitable tools 1x8 mm and 1x10 mm spanner (not included).

**HANDLEBARS**

To adjust the handle to a suitable height, stand behind the walker with shoulders level. The handles should be at the same height as the user's wrist. A therapist may suggest different handle heights to accommodate the special needs of a user.

**DOLOMITE LEGACY, OPAL 2000**

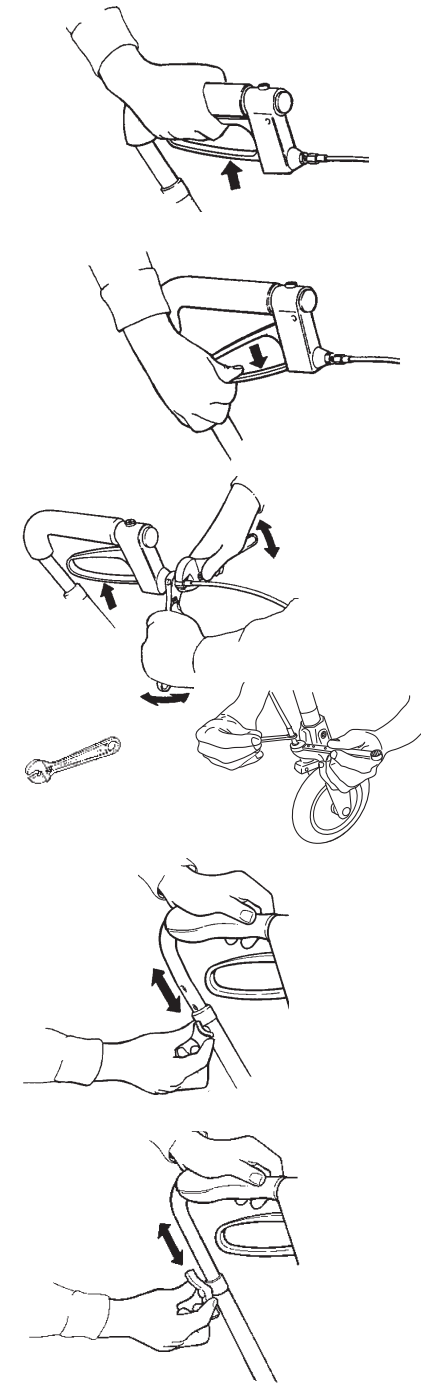
**For adjustment of handles with holes:**

Loosen the knob completely, remove the screw. Adjust the handle to suitable height. Fix the screw into the hexagonal hole and fasten the knob properly.

**DOLOMITE MAXI**

**For steples adjustment:**

Loosen the wring, adjust the handle to suitable height and tighten the wring properly.



## MAINTENANCE – SAFETY

To ensure good performance and safety you should regularly check that the following is carried out:

- Clean the rollator with solvent-free household cleaner. Keep the wheels clean.
- **Ensure that screws and adjustments** are properly tightened.
- **Immediately contact the nearest dealer if a fault should appear. Never use a defective walker.** Do not attempt repairs yourself!

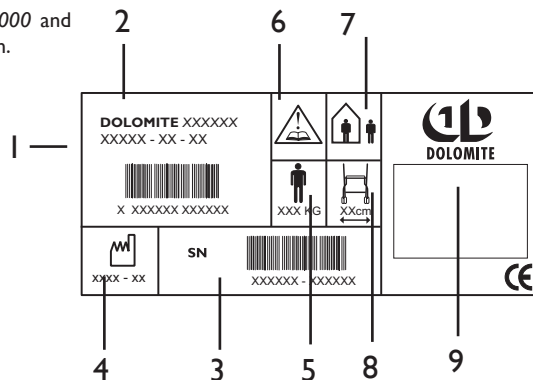
**N.B. Your walker should only be used as a walking aid! User's max. weight: DOLOMITE LEGACY, OPAL 2000 275 lbs. (125 kg, 20 stones). DOLOMITE MAXI 352 lbs. (160 kg, 25 stones) DOLOMITE HCP/DOLOMITE will not accept responsibility for adaptations, faulty repairs etc that are outside their control.**

## INSTRUCTIONS FOR DESTRUCTION OF PRODUCT AND PACKAGING:

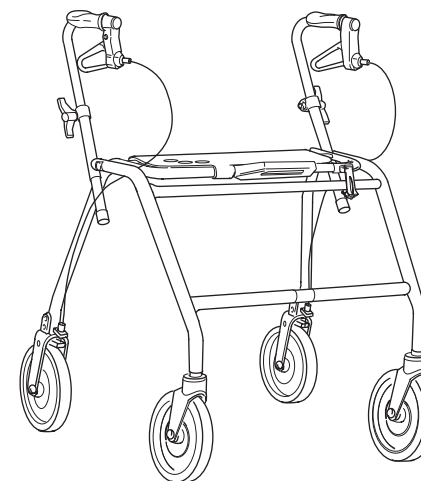
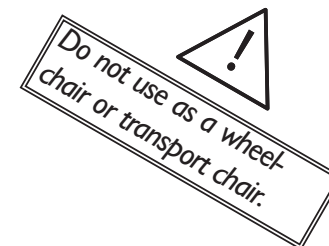
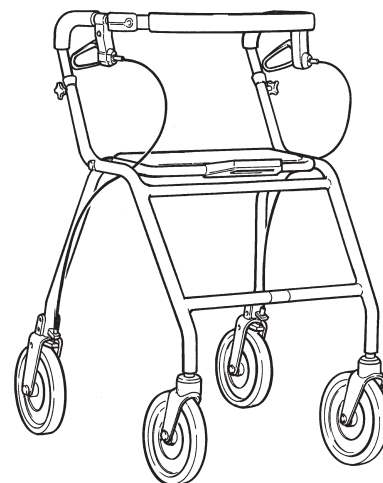
When the product can no longer be used, it and its accessories together with packaging material, should be sorted properly. The individual parts can be separated and handled according to the materials description.

The label on the **DOLOMITE LEGACY, OPAL 2000** and **MAXI** provides all important technical information.

- 1: Article number
- 2: Product name
- 3: Serial number
- 4: Date of manufacture
- 5: Max. user weight
- 6: NB! See user manual.
- 7: In- and outdoor rollator.
- 8: Max. width of rollator.
- 9: Manufacturer's name.



## DOLOMITE LEGACY, OPAL 2000, MAXI



82038-5 091228



INVACARE DOLOMITE AB, Box 200, 343 75 DIÖ, SWEDEN  
TEL +46 (0)476 535 00, FAX +46(0)476 535 99

[www.dolomite.biz](http://www.dolomite.biz)

Invacare Ltd, Pencoed Technology Park, Pencoed, UK-Bridgend CF35 5HZ  
Customer service: TEL (44) (0)1656 776 200, FAX (44) (0)1656 776 201  
[UK@invacare.com](mailto:UK@invacare.com), [eire@invacare.com](mailto:eire@invacare.com)



\*TESTED BY THE CENTRE FOR INDUSTRIAL RESEARCH (SINTEF), NORWAY